

7 Minto Place Smiths Creek NSW

8 6 8

Imagine waking up to the embrace of spectacular views stretching across the lush hinterland, UNESCO World Heritage Mt Wollumbin, and the distant border ranges. Here, every moment feels like a cinematic masterpiece, with nature as your ever-changing backdrop.

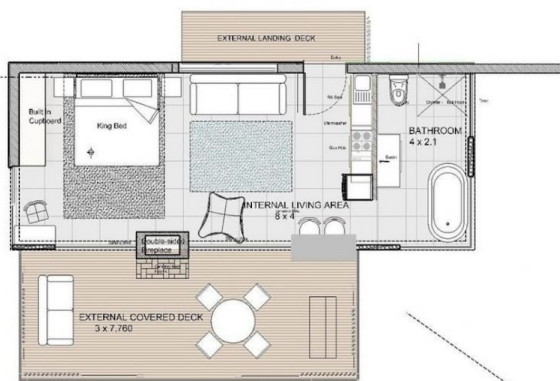
Nestled within this extraordinary 117-acre parcel of land lies a testament to thoughtful design and boundless creativity. Here, an exciting opportunity awaits to embrace eco-tourism, as the property currently operates as La Rocher Eco Retreat. What sets this retreat apart are not just one, but four luxury villas, each meticulously crafted by award-winning architects. Or consider starting with a blank canvas that allows you unlimited possibilities to establish your very own private estate and to build your dream home in this unique location.

Step inside these Villas, havens of indulgence, and you'll find yourself enveloped in luxury at every turn. From breathtaking vistas to lavish free-standing baths, every detail has been carefully considered to elevate your experience. Imagine lounging on the expansive covered deck, where the beauty of the surroundings invites you to

Price : Contact Agent
Building Size : 90 sqm
Land Size : 48.83 ha
View : <https://www.lsproperties.com.au/sale/nsw/northern-rivers/smiths-creek/residential/house/7983866>



Brent Savage
0477 122 559



STUDIO VILLA (nts)
(Plan is identical in each one)



WORKERS COTTAGE



MAIN RESIDENCE



SITE PLAN
RESIDENCES AND VILLAS