



39 Black Wattle Circuit Casuarina NSW

4 🚗 3 🚗 2 🚗

STRIKING ARCHITECTURE BLENDS COMMERCIAL GRADE luxury & breath-taking ocean views in this show stopping, east facing residence that dares to be different.

This property is for sale via Expressions of Interest with all offers closing on Friday the 10th of May at 5pm, unless sold prior.

Epitomising the coastal dream from its premiere beachfront position, "BLACK ON BLACK WATTLE" rises up over 3 luxurious levels to set a new benchmark in design excellence and moody seaside sophistication.

The striking sculptural façade, curved forms and elevated internal lines are a testament to creative architectural vision, demonstrating the essence of style, balance and harmony intertwined with commercial quality finishes.

The owners drew inspiration from their extensive travels and particularly the design principles of Geoffrey Bawa, the father of tropical modernism.

This brand-new concrete home draws from the colours of

Price : EOI Firm Close May 10
Building Size : 385 sqm
Land Size : 390 sqm
View : <https://www.lsproperties.com.au/sale/nsw/northern-rivers/casuarina/residential/house/7971034>



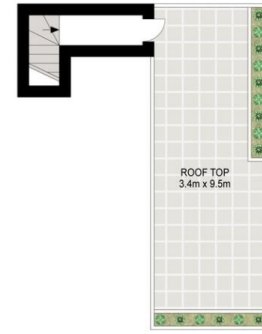
Lorna Savage
1300 067 177



Brent Savage
0477 122 559



FIRST FLOOR



ROOF TOP



GROUND FLOOR



Scale in metres. Indicative only. Dimensions are approximate. All information contained herein is gathered from sources we believe to be reliable. However, we cannot guarantee its accuracy and interested persons should rely on their own enquiries.

HOME SIZE INTERNAL: 385 m²
 LAND SIZE: 390 m²



39 Black Wattle Circuit, Casuarina

LS PROPERTIES