



**2/13 Mistletoe Circuit Kingscliff NSW**

3 2 1

Introducing this exceptional rear duplex, perfectly situated for comfortable living. Enjoy the serene, secluded setting that comes with a lush, green view, and a generously sized interior. The property boasts a fully fenced backyard, making it an ideal space for hosting gatherings, raising a family, keeping pets, and offering convenient side access for your extra toys.

**Price** : \$ 900,000  
**View** : <https://www.lsproperties.com.au/sale/nsw/northern-rivers/kingscliff/residential/semi-detached/7721504>

This single-level duplex is a rare gem, tucked away in a tranquil and highly sought-after location, granting direct access to expansive reserve land right from your private backyard gate. Additionally, it's just moments away from Kingscliff's Shopping Village, schools, the beach, the creek, public transportation, and the upcoming Tweed Valley Hospital (scheduled for completion later this year). Location truly is the essence of this home.

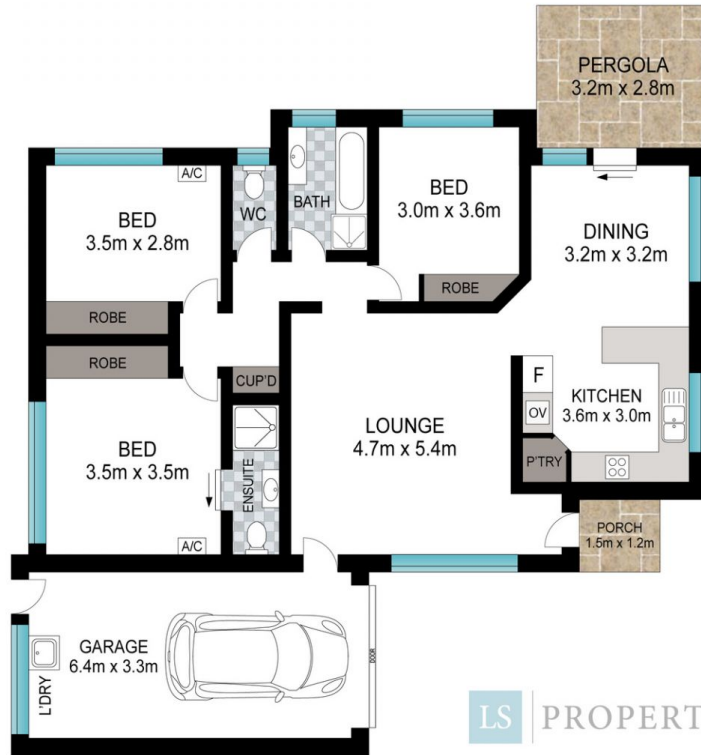


**Leanne Morris**  
**1300 067 177**



**Kristy Clear**  
**1300 067 177**

Inside, you'll find high ceilings and large windows that flood the space with natural light and refreshing cross breezes. Ceiling fans are thoughtfully placed throughout the home, and the master bedroom and a secondary bedroom is equipped with air conditioning.



LS PROPERTIES



Scale in metres. Indicative only. Dimensions are approximate. All information contained herein is gathered from sources we believe to be reliable. However, we cannot guarantee its accuracy and interested persons should rely on their own enquiries.

INT: 119 m<sup>2</sup>  
EXT: 12 m<sup>2</sup>

2/13 Mistletoe Circuit, Kingscliff

LS PROPERTIES