



## 8 Edinburgh Court Pottsville NSW

4 🏠 3 🚗 2 🚗

Don't just dream of an idyllic waterfront lifestyle, make it a reality with this Single Level beauty. Presiding over an impressive 934m2 canal-facing block within walking distance of the beach and creek, it's waiting just for you in what local's call "the best street in Pottsville".

**Price** : \$1,895,000  
**Land Size** : 934 sqm  
**View** : <https://www.lsproperties.com.au/sale/nsw/northern-rivers/pottsville/residential/house/7681281>

Featuring four spacious bedrooms and three contemporary bathrooms (with two acting as ensuites), fabulously fresh and bright interiors radiate throughout this single-level sanctuary. Galleries of glass invite abundant sunshine and stunning canal views in the open plan kitchen, living and dining zone, while soaring ceiling enhances the sense of light and space. An enviable social hub, it's where you can whip up a feast in the gourmet kitchen or curl up by the cosy fireplace. A second lounge room provides an additional area to unwind or embrace the glorious outdoors, with an expansive alfresco entertaining area and large yard. Here, gather with guests against an enchanting backdrop or take to the water and explore via kayak or SUP.

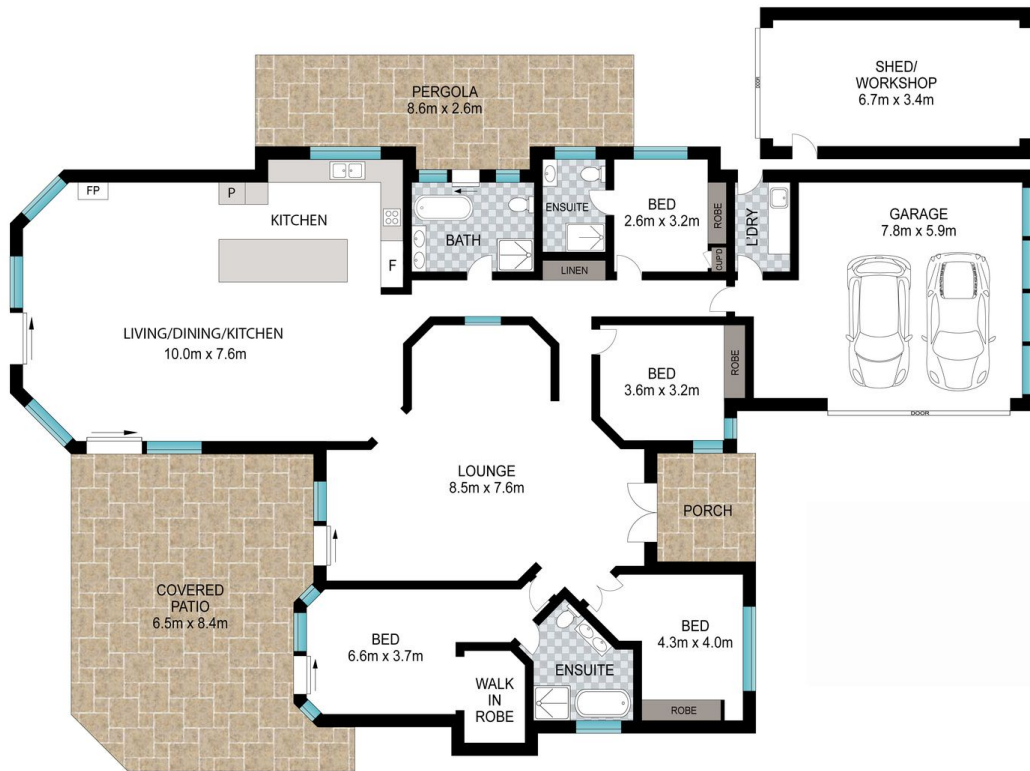
The addition of a fully powered and separate work-shed is a real bonus. With easy street access and through access,



**Leanne Morris**  
1300 067 177



**Kristy Clear**  
1300 067 177



INT: 247 m<sup>2</sup>  
EXT: 80 m<sup>2</sup>

Scale in metres. Indicative only. Dimensions are approximate. All information contained herein is gathered from sources we believe to be reliable. However, we cannot guarantee its accuracy and interested persons should rely on their own enquiries.

8 Edinburgh Court, Pottsville Beach

LS PROPERTIES