



### 34 Nautilus Way Kingscliff NSW

1 1 1

Only 260m to the beach, this Ocean Avenue Residence Townhome is located within a contemporary complex comprising of 16 two-storey detached townhomes designed by renowned architect Paul Uhlmann.

**View :** <https://www.lsproperties.com.au/sale/nsw/northern-rivers/kingscliff/residential/townhouse/7489253>

In the heart of Kingscliff's Seaside Village, this beautiful townhome offers a carefree coastal lifestyle, only steps to beaches, cafe's, walking/bikepaths and parklands.

Your beachside location makes this property the perfect weekender, investment property or your very own beach abode to enjoy!

Features you'll love...

#### DOWNSTAIRS

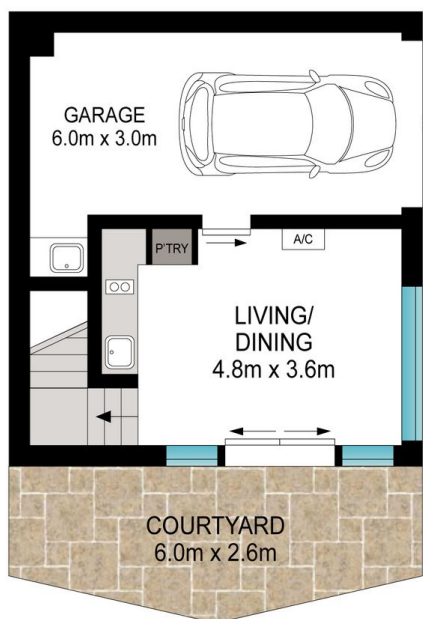
- Open plan kitchen/dining/lounge
- Dishwasher, gas dual cooktop and Bosch oven
- Split system air conditioning
- High ceilings
- Sliding doors open out onto a private courtyard
- Single garage with internal access
- Laundry to the rear of garage with wall mounted dryer



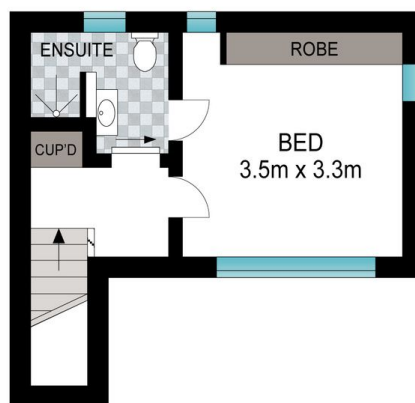
**Leanne Morris**  
1300 067 177



**Kristy Clear**  
1300 067 177



GROUND FLOOR



FIRST FLOOR



Scale in metres. Indicative only. Dimensions are approximate. All information contained herein is gathered from sources we believe to be reliable. However, we cannot guarantee its accuracy and interested persons should rely on their own enquiries.

INT: 66 m<sup>2</sup>  
EXT: 14 m<sup>2</sup>

34 Nautilus Way, Kingscliff

LS PROPERTIES