



1/27 Nautilus Way Kingscliff NSW

3 2 2

Owners are committed to selling and will consider all submitted offers!

In a captivating fusion of style and function, this architecturally designed townhome graces the shores of Seaside Village. 1/27 Nautilus Way is reminiscent of sun-drenched days, with its clean lines and fresh colour palette. With impeccable design and superb craftsmanship, this stunning residence caters to comfortable, low maintenance living.

Sitting just steps from the ocean, 1/27 Nautilus Way incorporates two separate living areas, a generous outdoor area and three well-appointed bedrooms. The grand proportions are emphasised in the main living quarters, with high ceilings to create an indulgent sense of space. The entertainer's kitchen boasts a full suite of SMEG appliances, luxe stone benches and beautiful cabinetry.

Spill from here onto the outdoor entertaining area, where a timber deck is ideal for hosting guests, and a glistening plunge pool invites afternoon refreshment. The relaxing ambience is further bolstered by the surrounding tropical

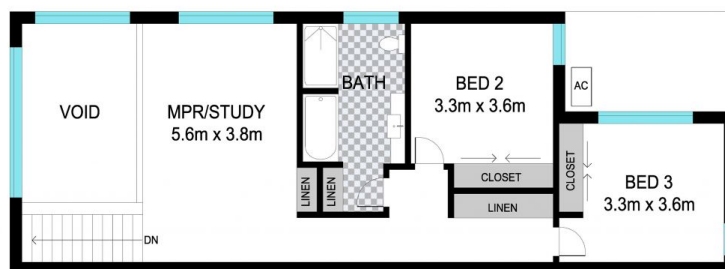
Land Size : 275 sqm
View : <https://www.lsproperties.com.au/sale/nsw/northern-rivers/kingscliff/residential/townhouse/7470704>



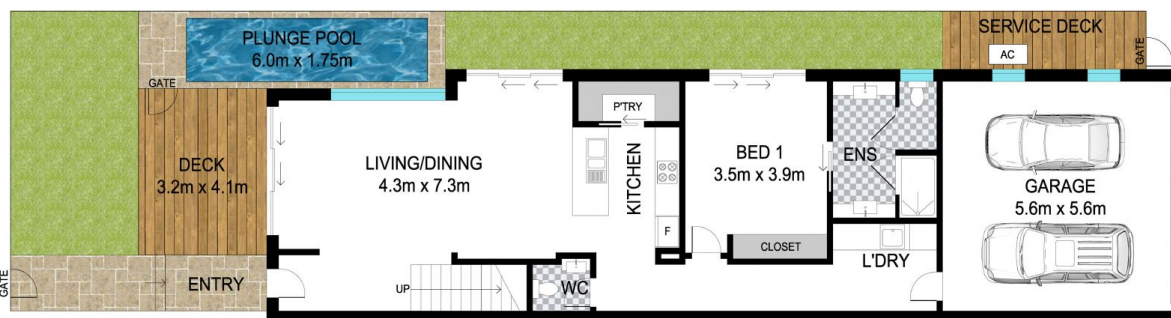
Leanne Morris
1300 067 177



Kristy Clear
1300 067 177



UPPER FLOOR



GROUND FLOOR



INT: 205 m²
EXT: 13 m²

Scale in meters. Indicative only. Dimensions are approximate. All information contained herein is gathered from sources we believe to be reliable. However we cannot guarantee its accuracy and interested persons should rely on their own enquiries.

1/27 Nautilus Way, Kingscliff