



21a Boomerang Street Kingscliff NSW

3 2 2

Nestled among the ecologically protected rain forest in central Kingscliff, this architecturally designed townhome is a 2-minute stroll from our world famous cafe and beach precinct. Wake to an orchestra of kookaburra calls and enjoy the cool summer breeze and plentiful winter sun offered by this north facing luxury residence. Being close to the beach, creek and cafes is what living in Kingscliff is all about.

Located on Boomerang Street and with adjoining easements, No 21a is quiet, private and convenient. Designed and built by life-long locals, the architectural brief was to create something distinctly different from the standard modern homes that have become cookie-cutter repeats in new beachside developments. Handcrafted by hardwood specialist builder Matt Coaker, 21a Boomerang is distinctly unique with extensive recycled timber and custom features throughout. No expense has been spared on this property.

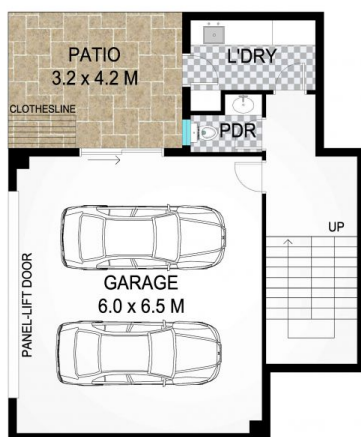
The property is adjacent to St Anthony's Private School and while rear access to the school can be busy for half an hour in the morning and afternoon on school days, the area

Land Size : 265 sqm

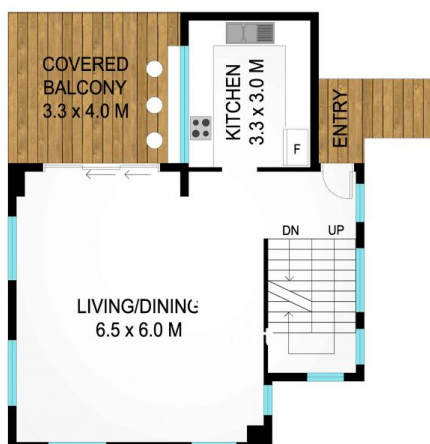
View : <https://www.lsproperties.com.au/sale/nsw/northern-rivers/kingscliff/residential/townhouse/6432825>



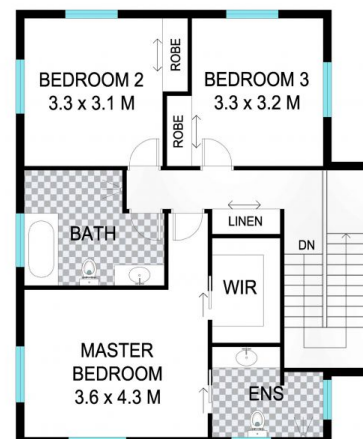
Leanne Morris
1300 067 177



LEVEL 1



LEVEL 2



LEVEL 3



INT: 217 m²
EXT: 29 m²



Scale in meters. Indicative only. Dimensions are approximate. All information contained herein is gathered from sources we believe to be reliable. However we cannot guarantee its accuracy and interested persons should rely on their own enquiries.