



67 Elanora Avenue Pottsville NSW

5 2 2

Welcome to this classic family beach house where you can kick off your shoes and start summer with the beach, creek and shops only a short stroll away.

Situated on a spacious 739m2 block, on one of the more tightly held beachside addresses along the Tweed Coast.

Classic french doors, plantation shutters, timber windows, and the white brick exterior create a timeless coastal feel! The main living area is complete with a brick fireplace and wet bar, ideal for entertaining year round.

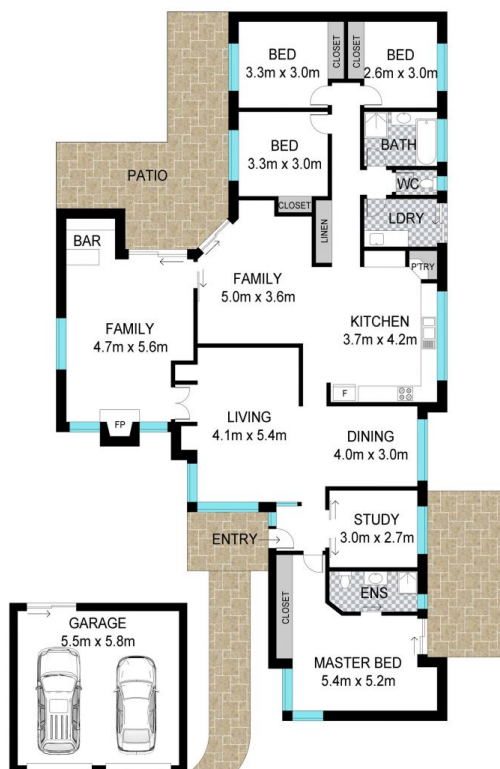
A versatile, single level design, presents multiple living spaces and a north east facing al fresco area, pool and lush backyard with plenty of room for the kids. With five bedrooms and two beautifully renovated bathrooms including the master en-suite, the home will comfortably support a growing family. The fifth bedroom is oversized and could be converted into a fabulous home office.

A double garage is completely separate and connected by a charming sunny courtyard at the entrance of the home.

Price : \$ 1,285,000
Building Size : 323 sqm
Land Size : 739 sqm
View : <https://www.lsproperties.com.au/sale/nsw/northern-rivers/pottsville/residential/home/5929577>



Brent Savage
0477 122 559



ELANORA AVENUE

SITE PLAN



Scale in meters. Indicative only. Dimensions are approximate. All information contained herein is gathered from sources we believe to be reliable. However we cannot guarantee its accuracy and interested persons should rely on their own enquiries.

67 Elanora Avenue, Pottsville

INT: 291 m²
EXT: 32 m²

