



1 Fairy Bower Street Kingscliff NSW

4 3 3

This bespoke, craftsman designer home is unique, generously scaled and well positioned on a premium corner block with Salt's pristine beaches located at the end of the street and award-winning dining, boutique shopping and parklands just a short stroll away.

Thoughtful design to maximise space for living and entertaining is evident from the moment you enter. Instantly be put at ease with large open plan living flowing seamlessly to the outdoor north-east facing covered alfresco area, pool and backyard. Relax by the pool or enjoy drinks watching your favourite sport in the outdoor entertaining area.

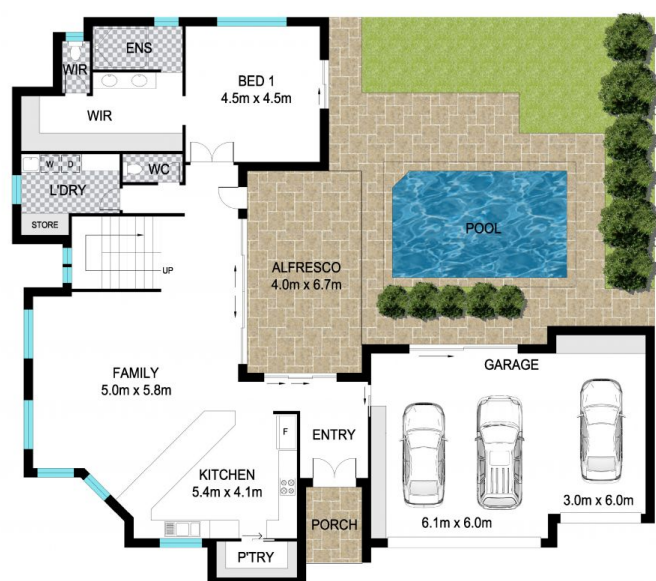
The oversized kitchen is well connected and offers abundant storage, stone bench tops and quality appliances. Entertaining would be a breeze - whether an intimate family dinner or a large gathering of friends. The generous master bedroom, complete with large ensuite and copious amounts of wardrobe space opens onto the pool area whilst maintaining privacy.

Featuring a suspended steel, timber and glass staircase to

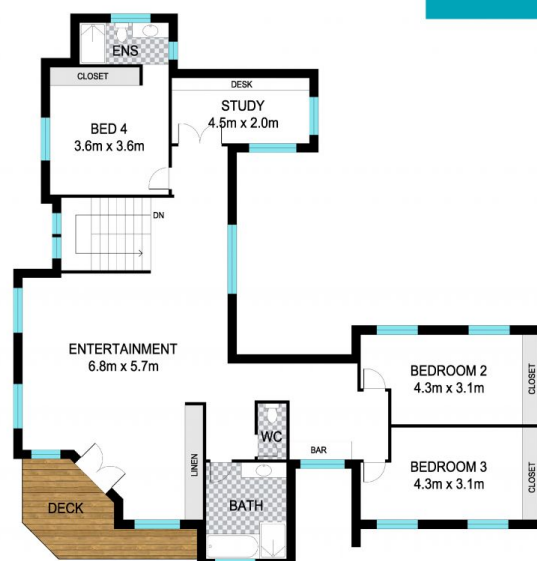
Land Size : 680 sqm
View : <https://www.lsproperties.com.au/sale/nsw/northern-rivers/kingscliff/residential/house/5929508>



Leanne Morris
1300 067 177



GROUND FLOOR



UPPER FLOOR



Scale in meters. Indicative only. Dimensions are approximate. All information contained herein is gathered from sources we believe to be reliable. However we cannot guarantee its accuracy and interested persons should rely on their own enquiries.

INT: 400 m²
EXT: 42 m²



1 Fairy Bower Street